



Attachment Instructions



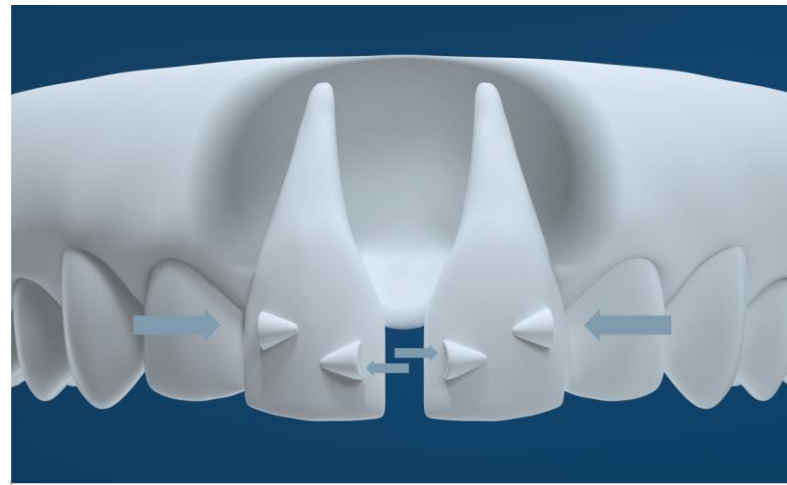
M2249

Index

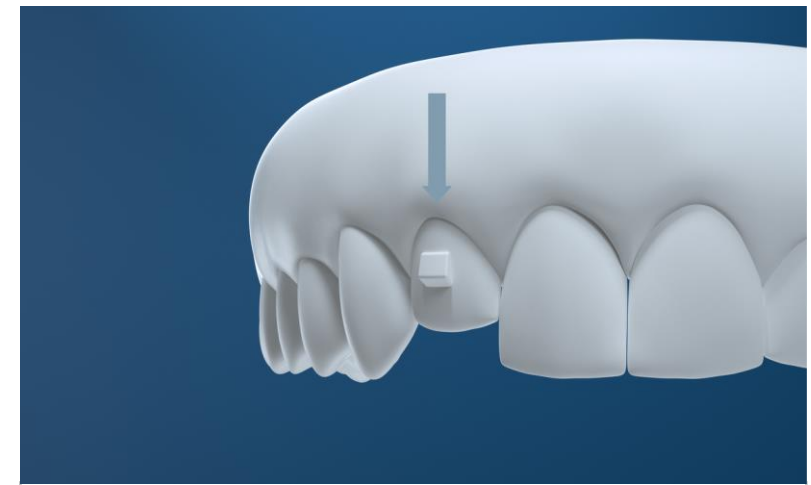
- 1 Attachments & Tooth Movement
- 2 Achieving Fewer Attachments
- 3 How to Bond Attachments
- 4 Bonding in Detail



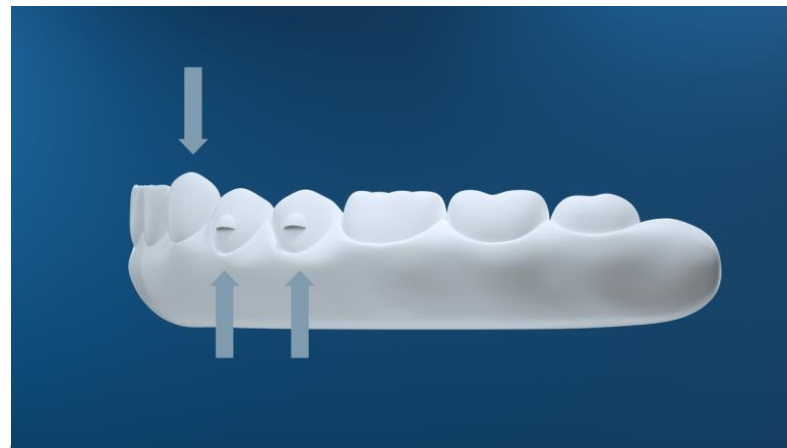
Attachments & Tooth Movement



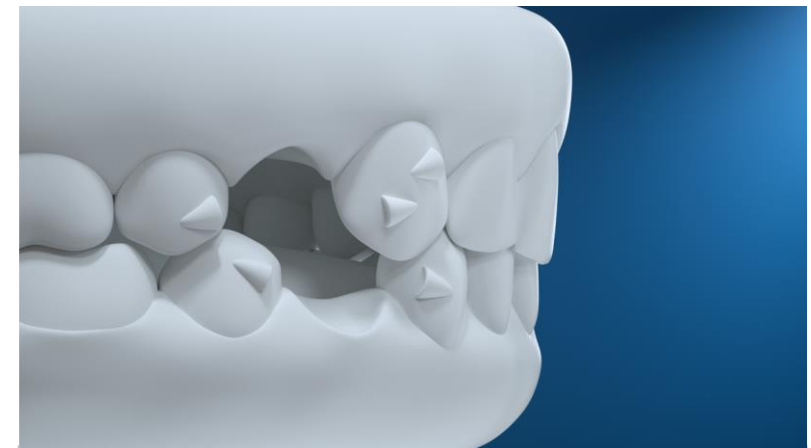
CERTAIN TIPS / TORQUES



EXTRUSION / INTRUSION



RETENTION



BODILY MOVEMENTS
(Sequential Distalization)

Reveal® requires fewer attachments primarily due to the close contact to the tooth and optimal fit.



Leading Competitor

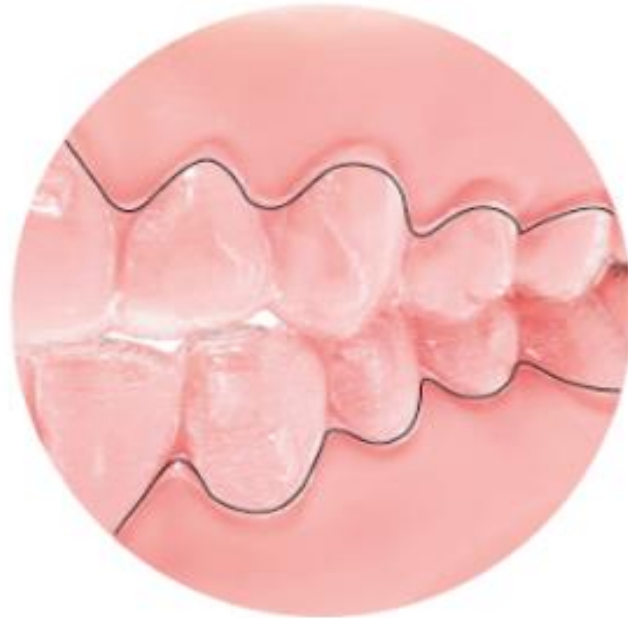


MORE ALIGNER-TO-TOOTH CONTACT

Reveal Aligners

Optimized Trim

Capturing the **interproximal soft tissue areas** provides **greater control** of the teeth without the need for as many attachments.



Leading Competitor



reveal[®]
CLEAR ALIGNERS

How to Bond Attachments

1

Pumice teeth to be etched as identified on the instruction sheet within the aligner case

2

Etch the tooth. Rinse and dry. Apply bonding agent-primer to the tooth and air dry.

3

Place pre-loaded attachment template on patient's teeth. Light cure with minimal pressure on each attachment as light cure adhesive bonds to tooth.

Bonding in Detail

- **What type of etch should be used:**

A self etching primer can be used as a one-step process. This is technique-sensitive and can be successful on the most anterior teeth that are not in danger of being contaminated. The most common etchant used in dentistry is 35% phosphoric acid. While the formulation may vary across dentistry, for orthodontics, no more than 37% is necessary. Please use as directed by the manufacturer.

- **What type of primer:**

Primer is used to provide bond strength between the attachment and the tooth. There are various composite bonding systems for orthodontics, please use as directed by the manufacturer.

- **Why pumice teeth:**

Teeth should be polished of any debris with a non-flavored, water-based pumice. Similar to bonding brackets, attachments need a clean and clear surface, free of removable stains or plaque build up.

- **Pre-load attachment template:**

Pre-loading the template in preparation for the attachments will serve to the ease of the appointment for the patient. If preloaded prior to the patient appointment, be sure to place loaded template in dark box so that the composite attachment material does not cure. Pack the attachment template with a micro-brush or plastic instrument until the attachment has been filled and flush. This will reduce the amount of flash to be removed at the end of the appointment.

- **Bonding to porcelain:**

To bond attachments to porcelain teeth, follow the same instructions with a porcelain etch and primer kit. These instructions will vary in application time limits. Please follow as directed by the manufacturer.

reveal[®]

CLEAR ALIGNERS

Ortho Organizers, Inc. 1822 Aston Ave. Carlsbad,
CA 92008-7306 USA. © 2021 Ortho Organizers, Inc.
All rights reserved. M2249
www.RevealClearAligners.com | (800) 344-3397

 HENRY SCHEIN[™]
ORTHODONTICS